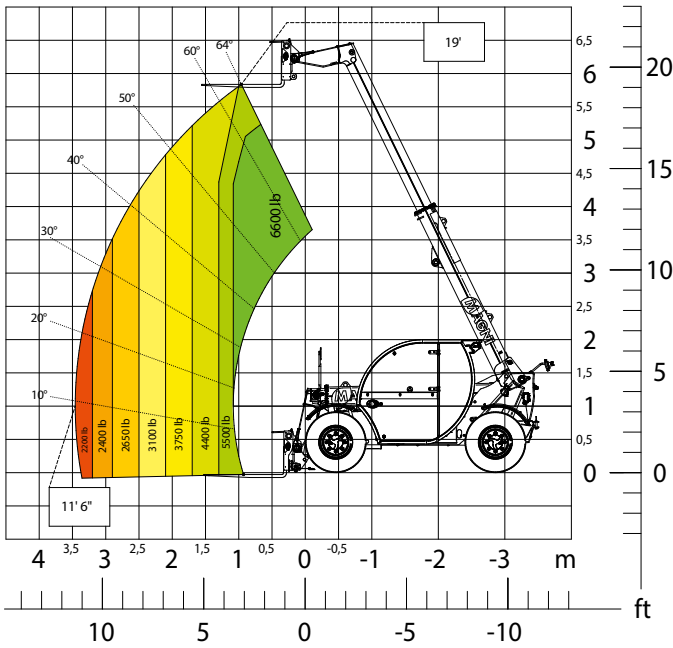


THA

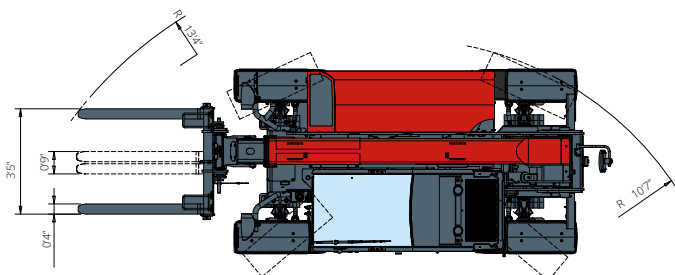
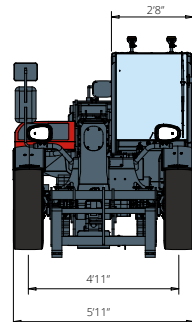
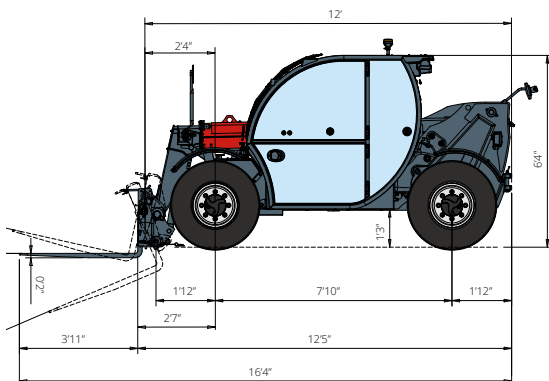


6.19

PRELIMINARY



AGRICULTURE



Machine model	Telescopic handler	THA 6.19	
	Maximum lifting capacity	6,600 lb	
	Maximum lifting height	19'	
	Maximum reach	10' 6"	
Engine	Model	Deutz TD 2,9 L4 EDG Stage IIIA	Deutz TD 2,9 L4 Stage V
	Rated power	55.4 kW (75.3 hp) at 2,600 rpm	
	Maximum torque	192 lb/ft at 1,600 rpm	
	Displacement	177 in ³	
	Cylinders	4 in line	
	Engine configuration	Turbocharged direct injection diesel	
	Cooling system	Water	
Transmission	Type	Hydrostatic	
	Maximum pressure	500 bar	
	Gear box	Electronic 2 speed forward-reverse	
Axles and brakes	Type	Axles with planetary gearboxes	
	Front axle	Steering	
	Rear axle	Free oscillation	
	Laterak shifting	-	
	No. of driving/steering wheels	4WD - 4WS	
	Steering mode	Frontal/Concentric/Crab	
	Service brake	Wet multi-disk on front axle	
	Parking brake	Hydraulic with negative action on front axle	
Performance	Tyres sizes	12.0/75 R18	
	Max. travel speed	21 mph	
	Turning radius (over tyres)	10' 6"	
Weights	Tractive effort	4,300 daN	
	Total unladen*	11,000 lb	
Tank and system capacities	Diesel fuel	17.2 U.S. gal	
	AdBlue	-	
	Hydraulic fluid	22.4 U.S. gal	
	Engine oil	2.4 U.S. gal	
	Coolant	4 U.S. gal	
Hydraulic circuit for movements	Circuit type	Gear pump	
	Service pump	Fixed displacement	
	Max. hydraulic flow rate	23 U.S. gpm	
	Max. boom head flow rate	19.8 U.S. gpm	
	Max. operating system pressure	255 bar	
	Controls for boom movements	Post-compensated electro-proportional valve	
	Movements control	1 joystick with integrated manoeuvre enable	
Standard met	2006/42/EC: EU Machinery Directive		
	2000/14/EC: Noise Directive		
	EN 1459-1: Relating to standards on the safety requirements for variable reach machines		
	EN 280-1: standards relating to mobile elevating work platforms (if available)		
	2014/30/EU: EMC Directive		
ROPS/level 1 FOPS: relating to the standards for protective structures			

The data given in this brochure are provided for information purposes and are subject to change without prior notice.

All images are purely guideline and might not give an exact representation of the product.

*the stated weight refers to the vehicle unladen with standard equipment and may vary depending on the chosen configuration.