

<b>Machine model</b>	Telescopic handler	THA 7.29
	Maximum lifting capacity	7,700 lb
	Maximum lifting height	29' 2"
	Maximum reach	20'
<b>Engine</b>	Model	<b>Deutz TCD 3,6 L4 EDG - Stage IIIA</b>   <b>Deutz TCD 3,6 L4 Stage V</b>
	Rated power	85 kW (115 hp) at 2,600 rpm
	Maximum torque	460 Nm at 1,600 rpm
	Displacement	219.7 in <sup>3</sup>
	Cylinders	4 in line
	Engine configuration	Turbocharged direct injection diesel
	Cooling system	Water
	<b>Transmission</b>	Type
Maximum pressure		500 bar
Gear box		Dropbox, 2 speeds forward-reverse
<b>Axles and brakes</b>	Type	Axles with planetary gearboxes
	Front axle	Steering
	Rear axle	Free oscillation
	Lateral shifting	-
	No. of driving - steering wheels	4WD - 4WS
	Steering mode	Frontal/Concentric/Crab
	Service brake	Wet multi-disk on front and rear axle
	Parking brake	Hydraulic with negative action on front axle
	Tyre size	405/70 R24
<b>Performance</b>	Max. travel speed	25 mph
	Turning radius (over tyres)	11' 1"
	Tractive effort	7,100 daN
<b>Weights</b>	Total unladen*	16,980 lb
<b>Tank and system capacities</b>	Diesel fuel	20 U.S. gal
	AdBlue	2.64 U.S. gal
	Hydraulic fluid	25 U.S. gal
	Engine oil	2.4 U.S. gal
	Coolant	4 U.S. gal
<b>Hydraulic circuit for movements</b>	Circuit type	Load sensing
	Service pump	Variable displacement
	Max. hydraulic flow rate	23.7 U.S. gpm
	Max. boom head flow rate	19.8 U.S. gpm
	Max. operating system pressure	315 bar
	Controls for boom movements	Compensated electro-proportional valve
<b>Road type approval</b>	167/2013: Mother Regulation	T1a
<b>Standard met</b>	2006/42/EC: EU Machinery Directive 2000/14/EC: Noise Directive EN 1459-1: Relating to standards on the safety requirements for variable reach machines EN 280-1: standards relating to mobile elevating work platforms (if available) 2014/30/EU: EMC Directive ROPS/level 2 FOPS: relating to the standards for protective structures	

The data given in this brochure are provided for information purposes and are subject to change without prior notice.

All images are purely guideline and might not give an exact representation of the product.

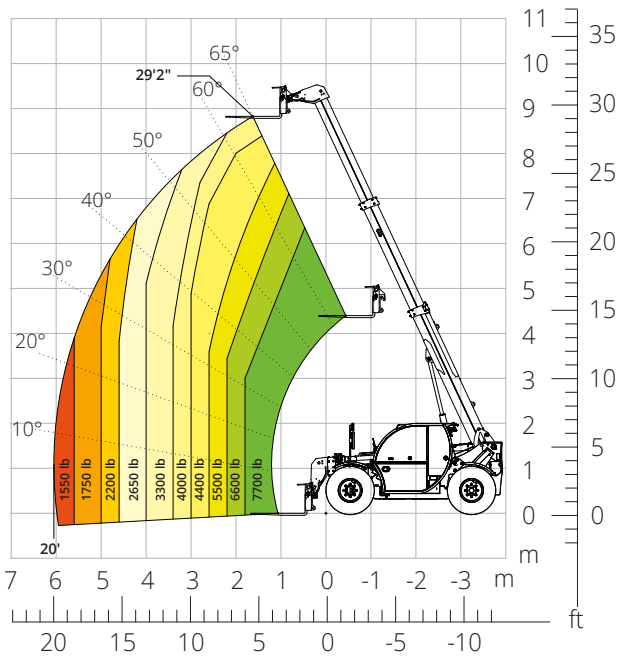
\*the stated weight refers to the vehicle unladen with standard equipment and may vary depending on the chosen configuration.

# THA



## 7.29

PRELIMINARY



Load chart on tyres



AGRICULTURE

