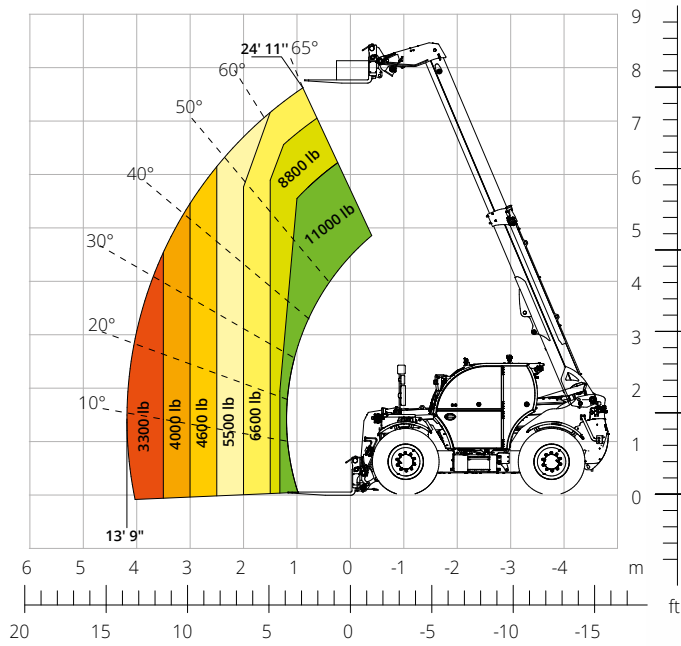


# THA

# 11.25 L

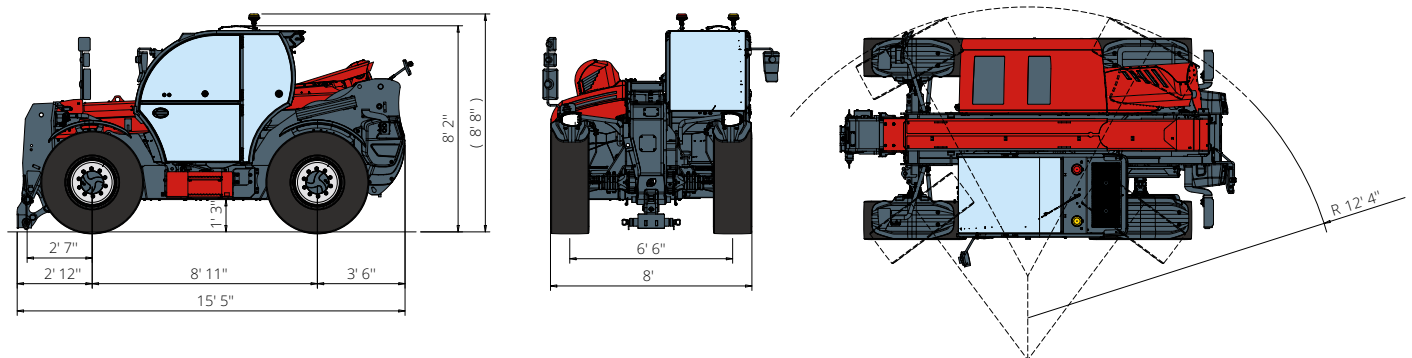
PRELIMINARY



Load chart **on tyres**



AGRICULTURE



<b>Machine model</b>	Telescopic handler	THA 11.25 L
	Maximum lifting capacity	11,000 lb
	Maximum lifting height	24' 11"
	Maximum reach	13' 9"
<b>Engine</b>	Model	<b>FPT N45 Stage V</b>
	Rated power	125 kW (170 hp) at 2,200 rpm
	Maximum torque	525 lb/ft at 1,500 rpm
	Displacement	274.7 in <sup>3</sup>
	Cylinders	4 in line
	Engine configuration	Turbocharged direct injection diesel
	Cooling system	Water – intercooler
<b>Transmission</b>	Type	Hydrostatic
	Maximum pressure	510 bar
	Gear box	Dropbox, 2 speeds forward-reverse
<b>Axles and brakes</b>	Type	Axles with planetary gearboxes
	Front axle	RTH 13.167
	Rear axle	Oscillating and steering
	Sideshift	-
	No. of driving/steering wheels	4WD - 4WS
	Steering mode	Frontal/Concentric/Crab
	Service brake	Wet multi-disk on front and rear axle
	Parking brake	Hydraulic with negative action on front and rear axles
	Tyres dimensions	460/70 R24
<b>Performance</b>	Max. travel speed	25 mph
	Turning radius (over tyres)	12' 4"
	Tractive effort	9,600 daN
<b>Weights</b>	Total unladen*	21,390 lb
<b>Tank and system capacities</b>	Fuel tank	34 U.S. gal
	AdBlue	5.3 U.S. gal
	Hydraulic oil tank	34 U.S. gal
	Engine oil tank	3 U.S. gal
	Cooling liquid	7.9 U.S. gal
<b>Hydraulic circuit for movements</b>	Circuit type	Electronic load sensing
	Service pump	Variable displacement
	Max. hydraulic flow rate	43.6 U.S. gpm
	Max. boom head flow rate	26.4 U.S. gpm
	Max. operating system pressure	350 bar
	Controls for boom movements	Compensated electro-proportional valve
	Movements control	1 joystick with integrated manoeuvre enable
<b>Road type approval</b>	167/2013: Mother Regulation	T1a
<b>Standard met</b>	2006/42/EC: EU Machinery Directive 2000/14/EC: Noise Directive EN 1459-1: Relating to standards on the safety requirements for variable reach machines EN 280-1: standards relating to mobile elevating work platforms (if available) 2014/30/EU: EMC Directive ROPS/level 2 FOPS: relating to the standards for protective structures	

The data given in this brochure are provided for information purposes and are subject to change without prior notice.  
 All images are purely guideline and might not give an exact representation of the product.

\*the stated weight refers to the vehicle unladen with standard equipment and may vary depending on the chosen configuration.