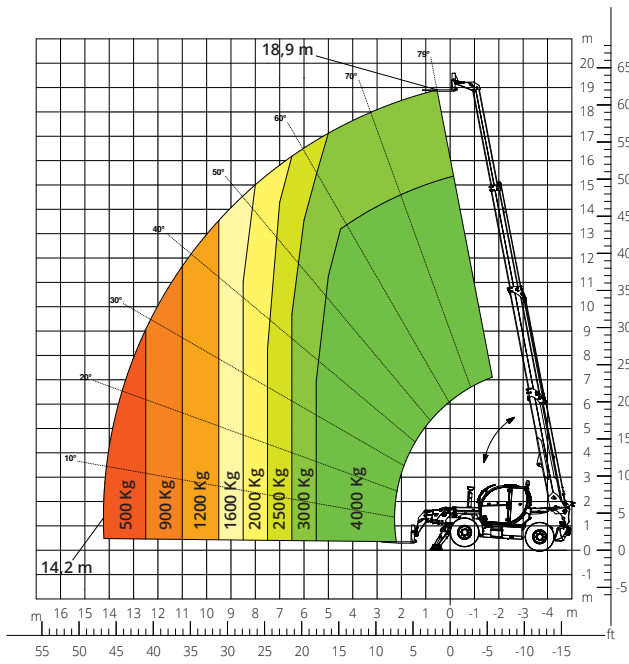


# TH



# 4.19 SP

PRELIMINARY



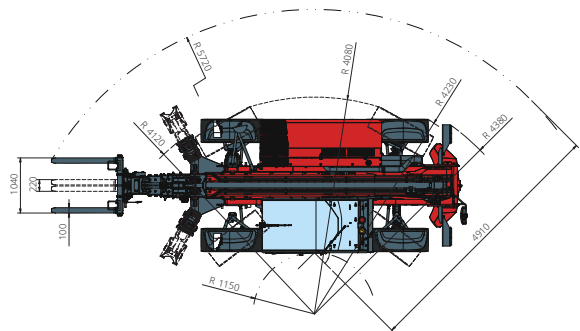
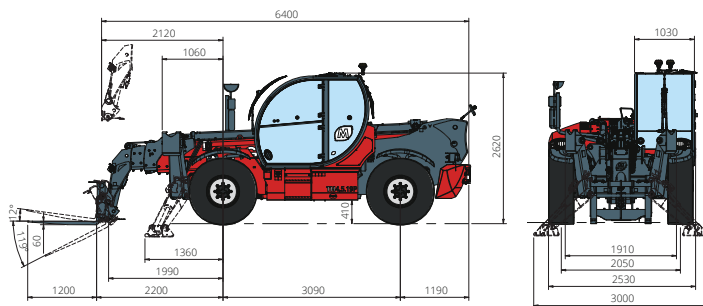
Load chart on stabilizers



CONSTRUCTION



LOGISTICS



<b>Machine model</b>	Telescopic handler	TH 4.19 SP
	Maximum lifting capacity	4,000 kg
	Maximum lifting height	18.90 m
	Maximum reach	14.20 m
<b>Stabilisers</b>	Type	Pivoting
<b>Engine</b>	Model	<b>Deutz TCD 3,6 L4 EDG Stage IIIA</b>   <b>Deutz TCD 3,6 L4 Stage V</b>
	Rated power	74.4 kW (101.2 hp) at 2,200 rpm
	Maximum torque	410 Nm at 1,600 rpm
	Displacement	3.6 l
	Cylinders	4 in line
	Engine configuration	Turbocharged direct injection diesel
	Cooling system	Water - intercooler
<b>Transmission</b>	Type	Hydrostatic
	Maximum pressure	530 bar
	Gearbox	Dropbox, 2 speeds forward-reverse
<b>Axles and brakes</b>	Type	Axles with planetary gearboxes
	Front axle	Oscillating and steering with levelling, +/-8°
	Rear axle	Free oscillation
	No. of driving - steering wheels	4WD - 4WS
	Steering mode	Frontal/Concentric/Crab
	Service brake	Wet multi-disk on front and rear axle
	Parking brake	Hydraulic with negative action on front axle
	Tyre sizes	445/65 R22.5
<b>Performance</b>	Max. travel speed	35 km/h
	Gradeability (unladen)	58%
	Turning radius (end of forks)	5,720 mm
<b>Weights</b>	Total unladen*	12,700 kg
<b>Tank and system capacities</b>	Diesel fuel	200 l
	AdBlue	10 l
	Hydraulic fluid	93 l
	Engine oil	9 l
	Coolant	20 l
<b>Hydraulic circuit for movements</b>	Circuit type	Gear pump
	Service pump	Fixed displacement
	Max. hydraulic flow rate	90 l/min
	Max. boom head flow rate	70 l/m (OPT)
	Max. operating system pressure	280 bar
	Controls for boom movements	Electro-proportional valve
<b>Standard met</b>	Movements control	1 joystick with integrated manoeuvre enable
		2006/42/EC: EU Machinery Directive 2016/1628: EU Regulation on the emissions of stage V engines EN 1459-X: relating to standards on the safety requirements for variable-reach trucks ROPS/level 2 FOPS: relating to the standards for protective structures

The data given in this brochure are provided for information purposes and are subject to change without prior notice. All images are purely guideline and might not give an exact representation of the product.

\*the stated weight refers to the vehicle unladen with standard equipment and may vary depending on the chosen configuration.