



**IN**  
**OUT**

**2WD**

**2WS**

# EAB17AC

Articulated boom lifts



## STANDARD EQUIPMENT

- Two-wheel drive
- Two-wheel steering
- 360°rotation (continuous)
- Proportional controls
- Flashing light
- Hour counter
- Horn
- Deadman
- Foam-filled Tyres

## BATTERY

- Lead-acid battery
- Battery capacity: 48V/280Ah
- Charger: 48V/35A
- Zero emissions

## BASKET

- Self-levelling

## SAFETY

- On-board diagnostics system
- Tilt indicator with alarm
- Drive enable system
- Manual Safety Pump

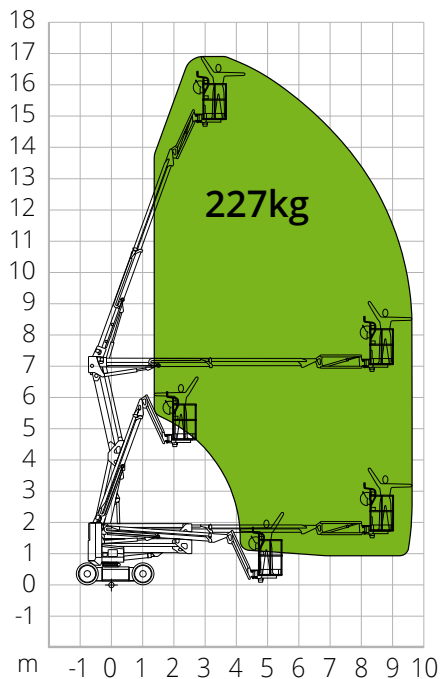


CONSTRUCTION



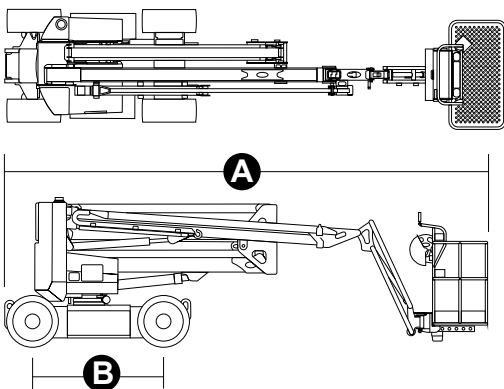
LOGISTICS

## LOAD CHART



## DIMENSIONS

Platform length		-
Platform length (transport)	<b>A</b>	5.06 m
Platform width (transport)		1.50 m
Platform height		-
Platform height (transport)		2.07 m
Wheelbase	<b>B</b>	1.80 m
Ground clearance		0.13 m



## EAB17AC

### Technical data

Max. working height	17.00 m
Max. basket height	15.00 m
Articulation point	7.00 m
Max. reach	9.70 m
Turning radius (inside)	2.17 m
Turning radius (outside)	3.14 m
Basket length	1.45 m
Basket width	0.76 m
Basket rotation	180°
Jib Vertical Rotation	+65°/-65°

### Performance

Platform max. load capacity	227 kg
Max. occupants	2
Max. gradeability (stowed)	0.25
Max. working slope	3°/3°
Travel speed (closed config.)	6.0 km/h
Travel speed (working config.)	1.1 km/h
Turret rotation	355°

**Total weight** 7,950 kg

### Specific characteristics

Tyres	28x12 (202)
Battery type	Lead-acid battery
Battery capacity	48V/300Ah
Charger	48V/35A
Driving motor	2x32VAC/3.3kW
Lifting motor	48V/3.8kW
Recharge time, 0 -100% (hours)*	-

\*Nominal. The actual value depends on weather and usage factors

**STANDARDS COMPLIANCE:** EN280-1-1, ANSI/SAIA A92.20

The data given in this brochure are provided for information purposes and are subject to change without prior notice. All images are purely guideline and might not give an exact representation of the product.